



**Smart Buildings. Real Savings. Zero Complexity.**

**Building Intelligence Without the Overhead**

# The Problem with Today's IoT—and How We Solve It



Rising energy costs, stricter ESG demands, and growing operational complexity are driving IoT adoption—but **most solutions fall short**. They rely on client Wi-Fi, are siloed across systems, are costly to install, and hard to scale, often delivering weak ROI.

**We solve this with a fully wireless, infrastructure-free IoT platform that connects HVAC, lighting, air, water, and energy systems into one unified, cloud-managed solution—no rewiring, no IT burden, and no reliance on your network.**

In partnership with Inferrix, a global OEM, we deliver smart sensors, controllers, and a centralized dashboard designed to:

- ✓ Cut operational costs
- ✓ Simplify building and facilities management
- ✓ Unlock SARS tax incentives and meet ESG goals
- ✓ Future-proof buildings with scalable, fast-to-deploy tech




# From ESG Pressure to Net Zero Performance




## — We Make It Achievable



### ESG compliance:

-  Reduce Energy Usage
-  Reduce & Process Waste
-  Reduce Water & Resource Usage
-  Reduce Emissions
-  Employment, Employee Welfare, and Associated Practices

### Net Zero Performance:

-  Reduce Operational Energy Usage – Scope 1, 2, 3
-  Reduce Construction & Embedded Carbon
-  Zero Net Carbon Emission



# What our clients have to say



"We needed to cut operating costs and meet green standards without overhauling our existing infrastructure. The Inferrix solution delivered immediate savings—no Wi-Fi, no downtime, and no disruption to tenants. Within months, we saw a real impact on both our bottom line and ESG scorecard."

— *David M., Director of Property Development, Johannesburg*



"Time and complexity are the biggest risks on any project. Inferrix helped us avoid both. Their wireless system saved us weeks on cabling and commissioning, and the platform was up and running before the build was even handed over. It's the fastest, cleanest integration we've ever had."

— *Nomsa T., Senior Project Manager, Mixed-Use Development, Cape Town*



"Inferrix has become our go-to for smart building automation. It's simple to install, doesn't rely on the client's network, and it just works. We're able to offer full BMS functionality—HVAC, lighting, IAQ, metering—without the usual cost or complexity. Our clients love it, and we deliver faster."

— *Ebrahim K., Lead MEP Engineer, Durban*

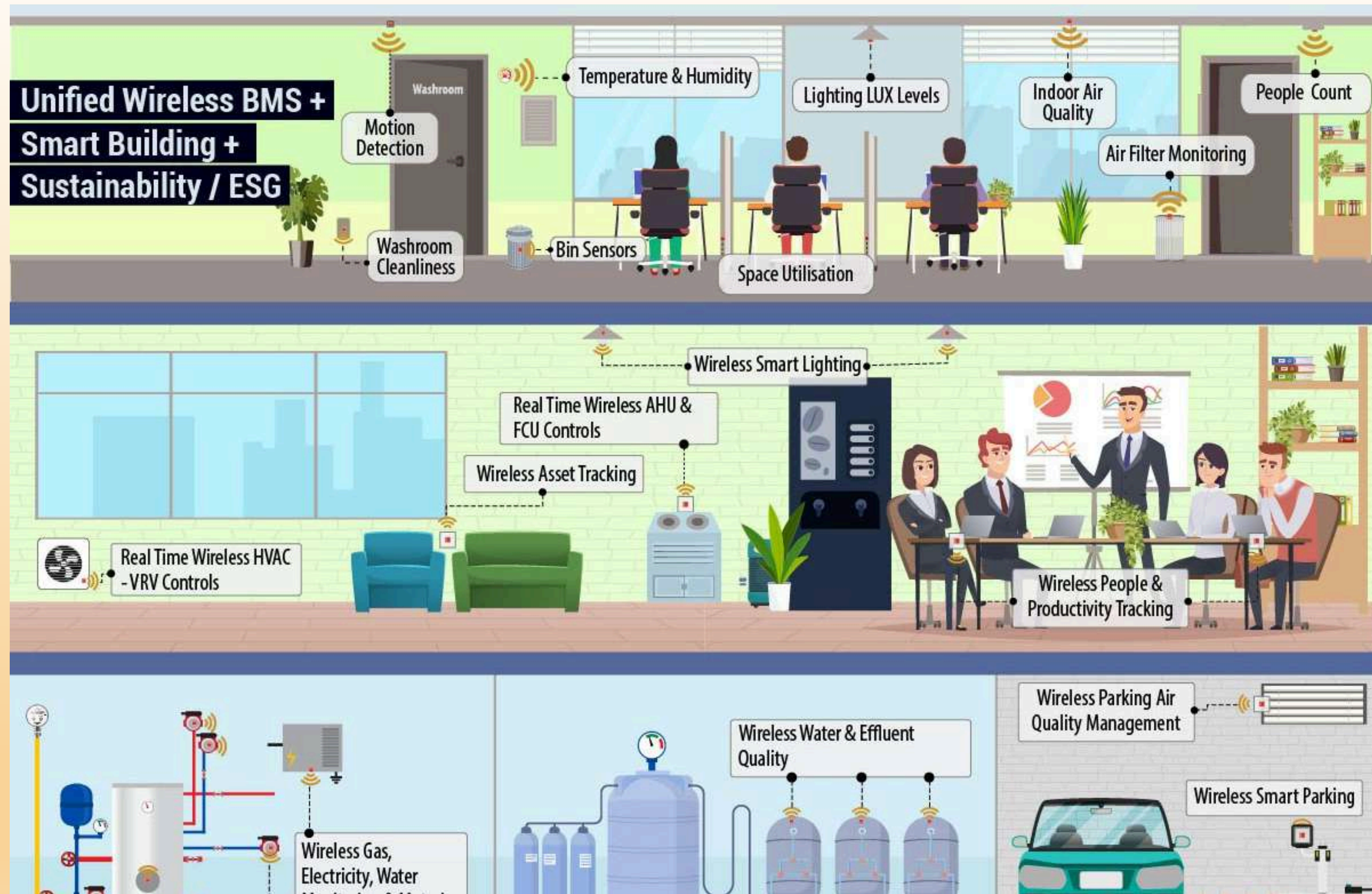


# INFERRIX Global footprint



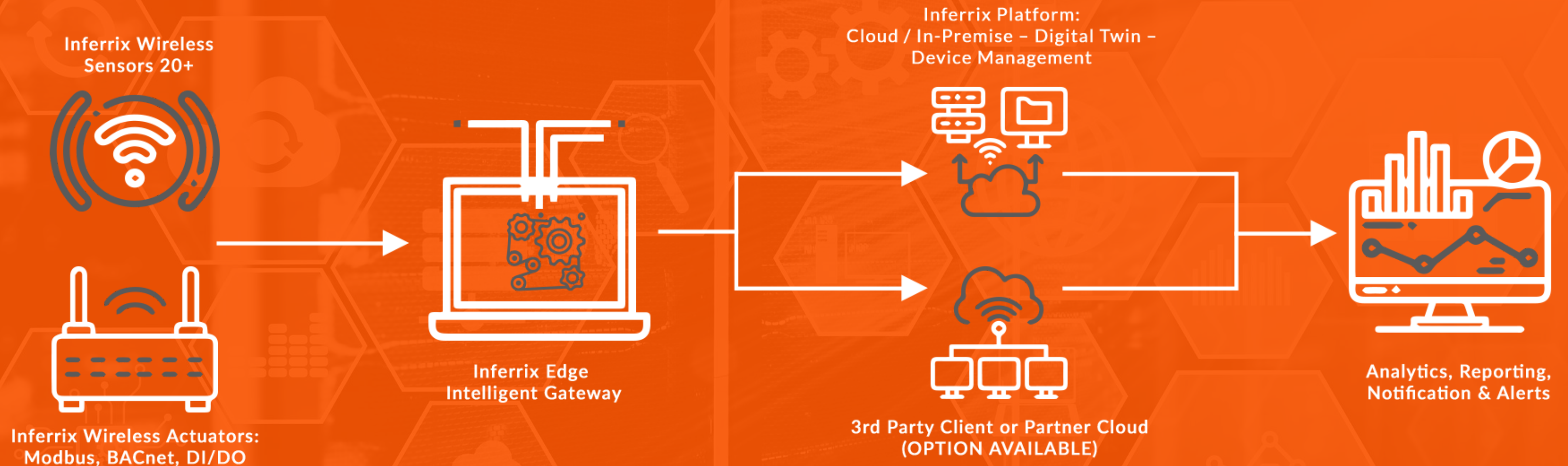
## What we monitor and manage:

- Wireless Smart BMS
  - Wireless Energy Management System
  - SBTi Reporting
  - Wireless Smart Lighting
  - Wireless ESG / GRI Standards Compliance – Temperature & Humidity, Internal Air Quality, LUX, Noise
  - Wireless Asset Management
  - Smart Parking
  - Smart Washroom
  - Smart People Count
  - Smart Leak Detection
  - Smart Water and Waste Quality / Usage
- ...and many more.



# INFERRIX EDGE **AI + IOT**

SINGLE PLATFORM WITH UNPARALLELED SMART BUILDING



# Why Businesses Choose Us



**Zero IT Headaches:** Our wireless mesh doesn't use your Wi-Fi or LAN



**Lower Project Costs:** 75% less cabling, 50% faster deployment



**Qualifies for SARS energy-saving tax benefits (Section 12L)** Increases property value & lowers operating expenses (OpEx)



**Full-stack:** One dashboard for HVAC, lighting, occupancy, air quality & more

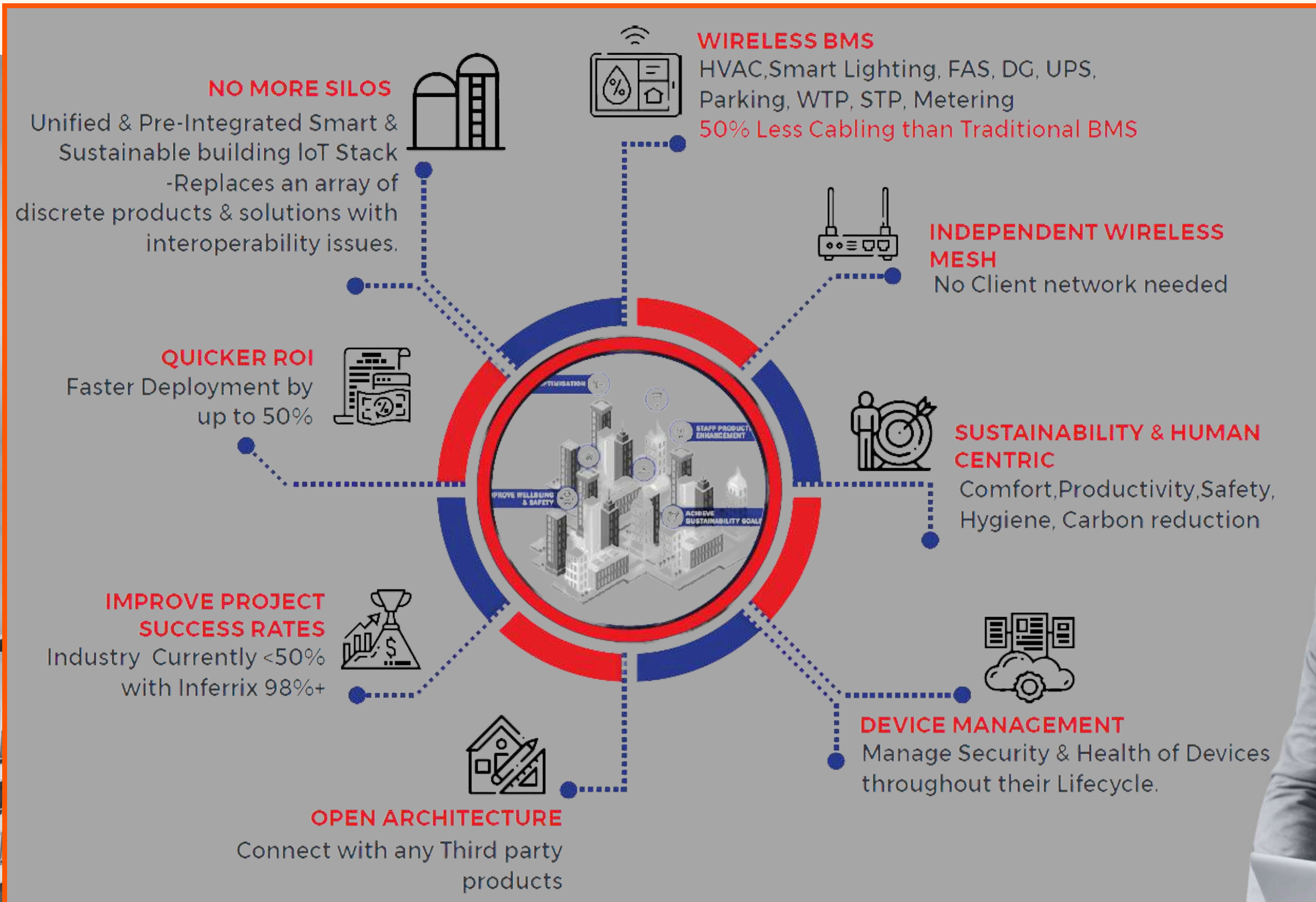


**Designed for Retrofitting or New Projects**



**Works even in areas with poor internet**






**Independent  
wireless mesh!**

**No more Silos!**



# Inferrix vs Traditional IoT Providers



Feature	 inferrix SMARTIFY YOUR BUSINESS	Traditional IoT / BMS Providers
Wi-Fi Needed	✗ Not required	✓ Yes – client Wi-Fi or LAN required
Installation Time	✓ 50% faster	✗ Slower – wired, complex integration
Cabling	✓ 75% less needed	✗ Extensive cabling needed
Multi-System Control	✓ Yes (Lighting, HVAC, Air, etc.)	✗ Usually siloed or partial
One Dashboard for All	✓ Yes	✗ Usually multiple vendor dashboards
Works During Load Shedding	✓ Yes – Mesh stays online	✗ Risk of Wi-Fi/Network outage
12L Tax Claim Support	✓ Data for verification	✗ Often no M&V support
Edge AI	✓ Built in	✗ Rarely included
Best Use Cases	Retrofits, New Builds, Malls, Hotels, Warehouses	Premium projects only

# Real ROI & Tangible Benefits



- Up to 49% energy savings on HVAC & lighting
- 20% lower maintenance costs via predictive alerts
- SARS Section 12L Tax Savings: Claim back R0.95/kWh
- Project Cost Reduction: Save on cable, labor, and installation
- Faster Payback: Typical ROI achieved in 6–18 months (project scope dependant)

**This is not a cost. It's a tax-claimable, profit-improving investment.**



# What You Gain



## For Developers & Owners:

- Reduce building OpEx
- Raise green credentials (GRIHA, LEED, EDGE, Net Zero Ready)
- Increase property value
- Simple central management



## For MEPs & Project Managers:

- Easy-to-install, zero network dependency
- Avoid Wi-Fi, long cabling, IT complications
- Standardize across sites with fewer vendors
- Faster project delivery, reduced handover risk











## For Facilities, Operations and H&S Teams:

- One dashboard for all building systems
- Real-time occupancy, air quality, HVAC, lighting & more
- Fewer breakdowns, better comfort, automated reporting

# Use Case example



## Retrofitting 26 Buildings across 26 Locations in Major Government Department – 1569 Wireless Sensors

inferrix					
	SERVICES	WIRELESS – No Client Network	OPTIMIZE MAINTENANCE - INCREASE UPTIME	ESG - DRIVE SUSTAINABILITY	ONE VIEW
	Energy Management: CRAC Controls, UPS, Mains, DG, Racks + Fuel Monitoring	●	●	●	●
	Centralized Monitoring: Productivity Gains	●	●	●	●
	Temperature – Humidity: Rack & DC	●	●	●	●
	Access Control	●	●	●	●
	Water Leakage	●	●	●	●
	FAS	●	●	●	●
	Door Status	●	●	●	●
	Smart Lighting	●	●	●	●

### Key Benefits from this project:

- End to End View of all Buildings on ONE CENTRALIZED PLATFORM
- Increased Productivity – No Need for Manual Monitoring of each location
- Minimal Cabling – Wireless Monitoring, 60% less Cabling
- Quick Deployment - All locations deployed & retrofitted in 12 Weeks
- Reporting Automated – No more erratic Manual Reporting
- Reduce Carbon Footprint

# Businesses making use of **Inferrix** solutions



Let's simplify your buildings, reduce your costs, and unlock hidden value



+27 011 480 4843  
+27 (0)67 412 4726  
sales@sisekela.com  
www.sisekela.com

Let's Discuss



**SiSekela**

in partnership with



**inferrix**  
SMARTIFY YOUR BUSINESS